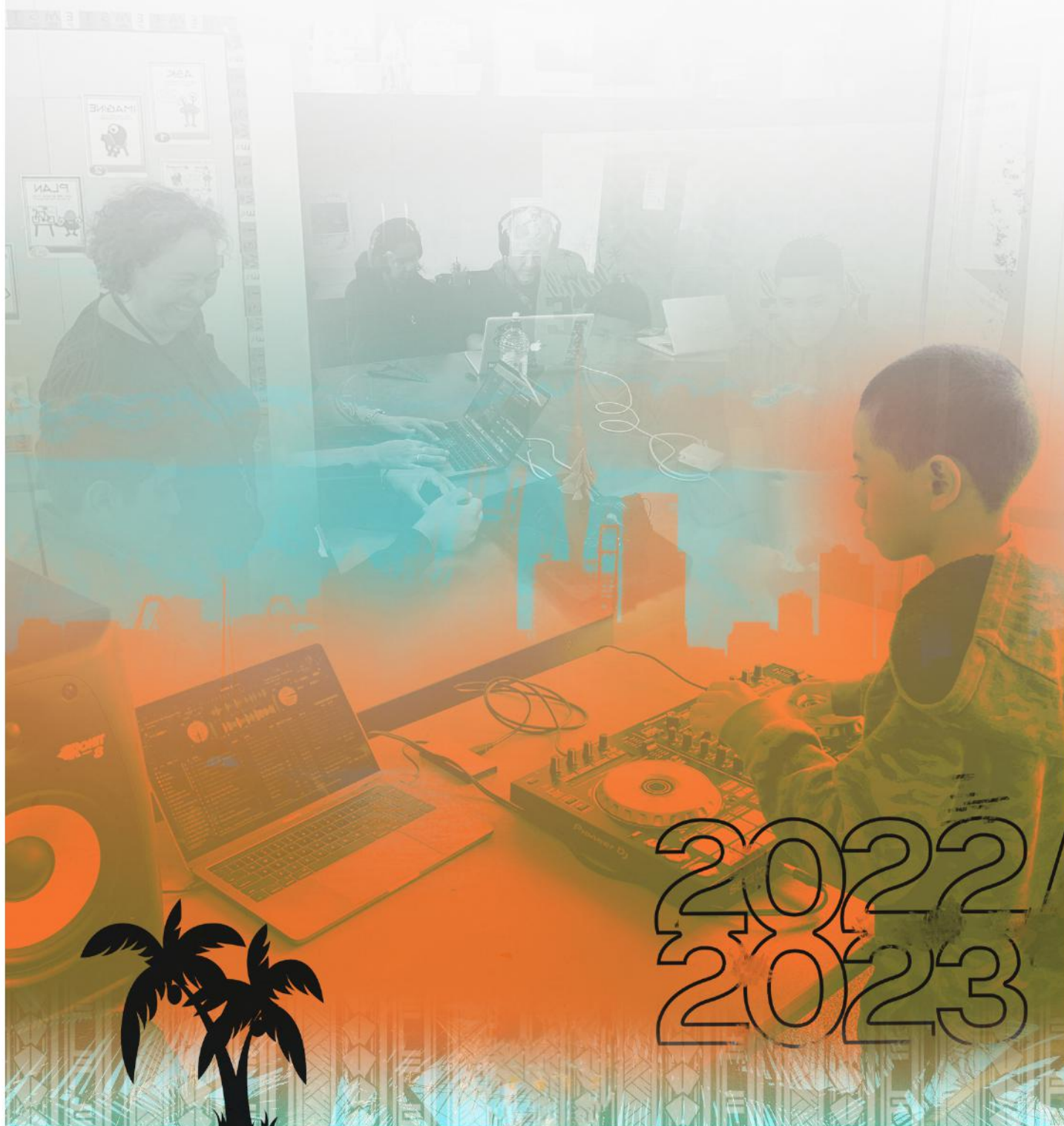


# ISLAND BASE ANNUAL REPORT 2022/2023

CONNECTING THE SOUNDS & PEOPLE OF THE SOUTH PACIFIC.  
[WWW.ISLANDBASEFM.COM](http://WWW.ISLANDBASEFM.COM)



# 2022/ 2023



# NATIONALLY AND INTERNATIONALLY RECOGNISED,

THE ISLAND BASE MISSION IS TO CONNECT THE PEOPLE OF THE SOUTH PACIFIC BY PROVIDING A FUN AND SAFE ENVIRONMENT FOR RANGATAHI OF ALL AGES FOR SELF-EXPRESSION AND TO FIND THEIR OWN VOICE.

## FROM OUR EXECUTIVE DIRECTOR.

Operating for half a decade now, Island Base Trust has really found its feet. With strong partnerships formed and proven community impact, we feel confident in the work we deliver. Our youth mentoring programs are reviewed and improved constantly and it has become pivot that they not just about music; they are a journey of self-discovery, skill development, and empowerment.

Through our recent activities, we have gained valuable insights into the specific challenges and opportunities faced by our mentees. We have observed the importance of providing a holistic support that addresses not only their musical development but also their personal growth and well-being. Additionally, we have recognised the significance of creating opportunities for mentees to connect with each other and with the broader music community, fostering collaboration and networking.

We want to keep investing in the future of our rangatahi. Continue to provide these transformative mentoring programs, ensuring that each young person we reach has the opportunity to flourish and contribute positively to their community.

Creating alternative education and pathways for Māori and Pacific youth through music mentoring is a powerful way to empower these communities. By offering mentorship programmes tailored to their cultural backgrounds and interests, we can provide valuable opportunities for skill development, personal growth, and career advancement.

It serves as a bridge that connects individuals with their cultural heritage while also equipping them with the tools and resources they need to succeed in the music industry. Moreover, we offers a supportive environment where Māori and Pacific youth can express themselves creatively, build confidence, and develop a sense of belonging. By celebrating their cultural identity through music, these programs contribute to cultural preservation and community cohesion.



**JAZZ LOLESIO**

Island Base Trust  
Executive Director / Trustee



**UPLIFTING OUR PEOPLE AND  
WITH A FOCUS ON EDUCATING  
THE NEXT GENERATION OF  
MĀORI & PACIFIC YOUTH  
THROUGH MUSIC, ISLAND BASE  
IS A PLATFORM CONSISTING OF  
AN INTERNATIONAL ONLINE  
STATION, EVENTS &  
PRODUCTION COMPANY AND  
RECORDING STUDIO.**

## FROM OUR YOUTH MENTOR.

At Island Base, we believe that arts & culture make considerable and necessary contributions to the wellbeing of communities. Music and other creative outlets are powerful tools, engaging communities in various levels of change.

Our programmes are designed to support this vision by providing a safe space and guidance by mentoring artists (row models) resulting in a higher level of self-expression, confidence, self-worth, sense of belonging and therefore resilience. To create a stronger level of equality and empowerment of the next generation as the basis, resulting in public dialogue for community mobilisation & activism and help build community capability and leadership to create a better future.

Our team here at Island Base FM are dedicated to uplifting and educating the next generation of Māori & Pacific Youth through music. We have a strong focus on finding young talent, mentoring them, producing live events and showcasing fresh talent alongside established and world-class artists to recording new tracks and featuring those live on the radio across the South Pacific. With the overall objective of creating future career pathways for music practitioners by providing accessibility and connectivity for underserved communities. Island Base gives youth a platform through which they build their confidence, gain a sense of belonging, realise their passion and above all, develop pride in their work.

As an artist myself, being part of their journey alongside of them is the best reward I could ask for.



**KYLE POPHAM 'KP'**

Island Base Trust

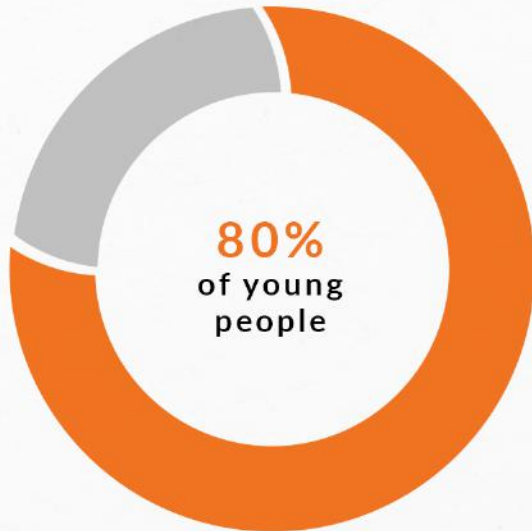
Trustee

KOA Productions / Director

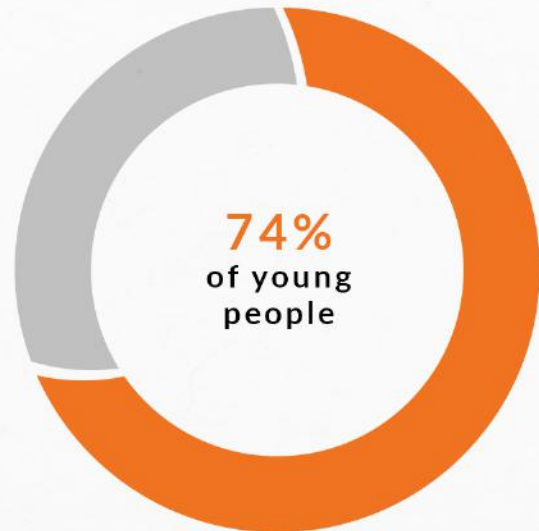


**ISLAND BASE GIVES YOUTH A PLATFORM THROUGH WHICH THEY BUILD THEIR CONFIDENCE, GAIN A SENSE OF BELONGING, REALISE THEIR PASSION AND ABOVE ALL, DEVELOP PRIDE IN THEIR WORK**

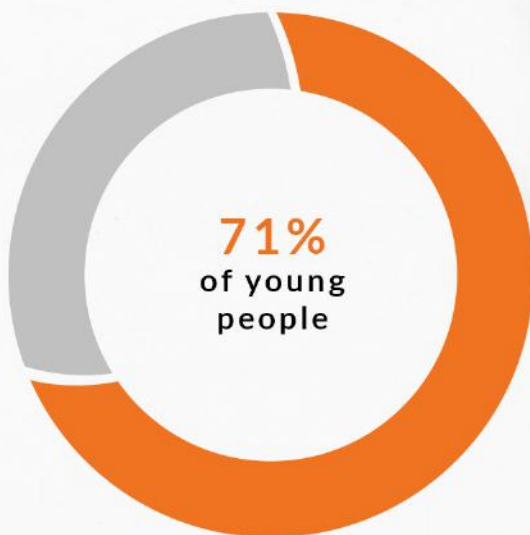
# OUR RANGITAHU CONTINUE TO **FEEL GOOD** PARTAKING IN CREATIVE ACTIVITIES.



feel good or  
excellent when they  
do creative things



say taking part  
helps them feel good  
about life in general



say taking part  
makes them feel more  
confident



Statistics provided by [CreativeNZ.govt.nz](http://CreativeNZ.govt.nz)

# OUR OUTCOME

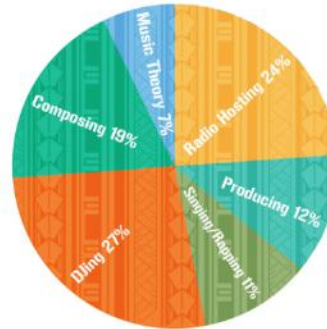
**432 MENTEES**  
**1861+ HOURS**

Arts & culture make considerable and necessary contributions to the wellbeing of communities. Music and other creative outlets are powerful tools, engaging communities in various levels of change. Our programmes are designed to support this vision by providing a safe space and guidance by industry professionals (row models) resulting in a higher level of self-expression, confidence, self-worth, sense of belonging and therefore resilience.

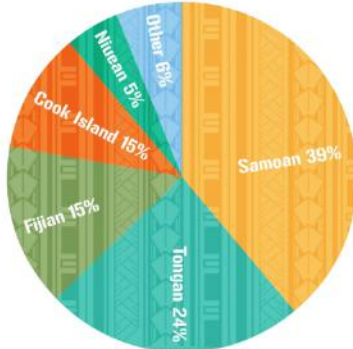
Objectives

Mentoring
Upskilling
Professional Development
Supporting Mental Wellbeing & Resilience
Promoting Diversity & Inclusivity
Support for Maori & Pasifika
Self-expression & confidence building

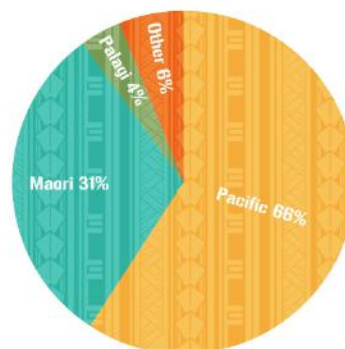
Skills Gained



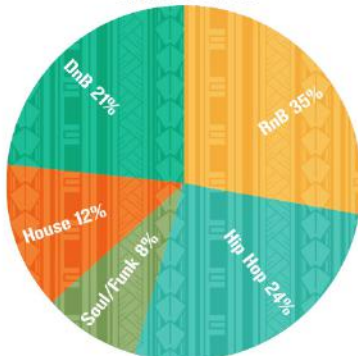
Ethnicity



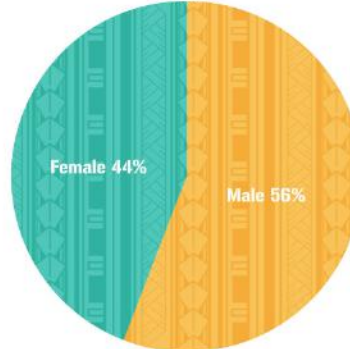
Heritage



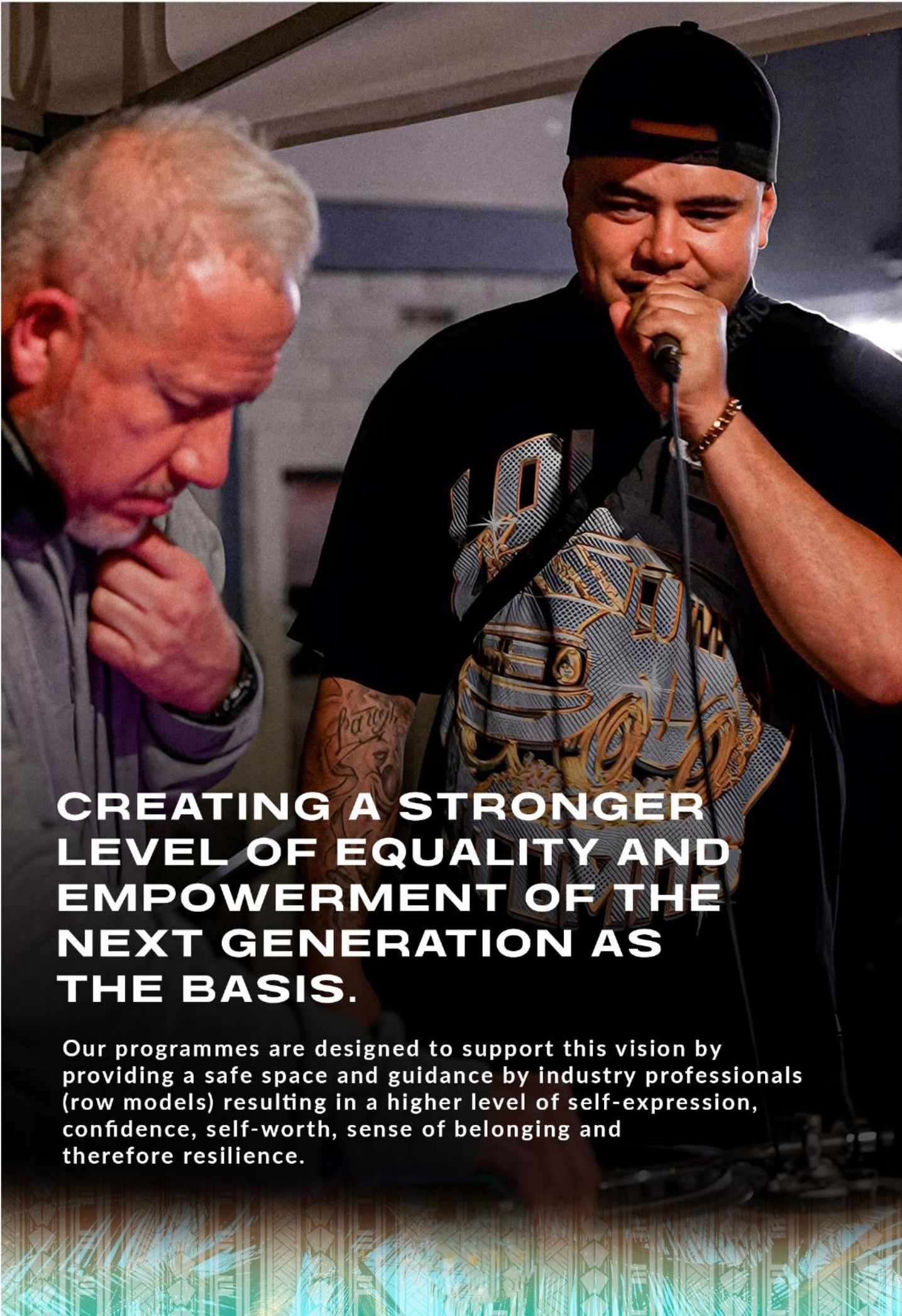
Music Genres



Gender







**CREATING A STRONGER  
LEVEL OF EQUALITY AND  
EMPOWERMENT OF THE  
NEXT GENERATION AS  
THE BASIS.**

Our programmes are designed to support this vision by providing a safe space and guidance by industry professionals (row models) resulting in a higher level of self-expression, confidence, self-worth, sense of belonging and therefore resilience.

# Compilation Report

## Island Base Trust For the year ended 31 March 2023

Compilation Report to the Directors of Island Base Trust.

### Scope

On the basis of information provided and in accordance with Service Engagement Standard 2 Compilation of Financial Information, we have compiled the financial statements of Island Base Trust for the year ended 31 March 2023.

These statements have been prepared in accordance with the accounting policies described in the Notes to these financial statements.

### Responsibilities

The Trustees are solely responsible for the information contained in this financial report and have determined that the accounting policies used are appropriate to meet your needs and for the purpose that the financial statements were prepared.

The financial statements were prepared exclusively for your benefit. We do not accept responsibility to any other person for the contents of the financial statements.

### No Audit or Review Engagement Undertaken

Our procedures use accounting expertise to undertake the compilation of the financial statements from information you provided. Our procedures do not include verification or validation procedures. No audit or review engagement has been performed and accordingly no assurance is expressed.

### Independence

We have no involvement with Island Base Trust other than for the preparation of financial statements and management reports and offering advice based on the financial information provided.

### Disclaimer

We have compiled these financial statements based on information provided which has not been subject to an audit or review engagement. Accordingly, we do not accept any responsibility for the reliability, accuracy or completeness of the compiled financial information contained in the financial statements. Nor do we accept any liability of any kind whatsoever, including liability by reason of negligence, to any person for losses incurred as a result of placing reliance on this financial report.

---

Fantail Finances Ltd

Auckland

Dated: September 2023



# Entity Information

## Island Base Trust

For the year ended 31 March 2023

### Legal Name of Entity

Island Base Trust

### Entity Type and Legal Basis

Charitable Trust (Established 15 September 2020)

### Registration Number

CC58783

### Entity's Purpose or Mission

The charitable objects and purposes of the Trust ( The Trust Purposes) are as follows:

- (a) To find and develop aspiring young musicians, especially amongst Maori & Pacific communities.
- (b) Connecting the islands and cultures through music.
- (c) Provide a safe space and mentorship with kind and professional industry experts.
- (d) Pairing up young creatives with a Base FM DJ or artist and tap into the radio station by using it as a platform for our tamariki to connect with industry leaders

### Entity Structure

Island Base Trust is governed by a board of directors, and charity law requires at least three directors for an incorporated charity in most jurisdictions. The directors found the charity, adopt its bylaws, and make policy and operational decisions by majority vote.

Our 3 directors are:

Jasmin Lolesio

Kyle Popham

Chris Hartnett

Alongside the board of advisors.

### Main Sources of Entity's Cash and Resources

Service Contracts and Grants

### Main Methods Used by Entity to Raise Funds

Service Contracts and Grants

### Entity's Reliance on Volunteers and Donated Goods or Services

Volunteers are individuals who provide services to the trust to assist the organisation with providing services to the community. The trust does not have contracts with volunteers and will not provide any compensation, except under special circumstances. They will not be considered as full-time or part-time employees of the organisation.

### Physical Address

Onehunga Community Centre

83 Church St, Auckland 1061

# Approval of Financial Report

## Island Base Trust For the year ended 31 March 2023

The Trustees are pleased to present the approved financial report including the historical financial statements of Island Base Trust for year ended 31 March 2023.

APPROVED



Jasmin Lolesio

Trustee

Date 28/09/2023



Kyle Popham

Trustee

Date 28/09/2023



# Statement of Service Performance

## Island Base Trust

For the year ended 31 March 2023

### Description of Entity's Outcomes

The mission is to find and develop aspiring young musicians, especially amongst Maori & Pacific communities and connecting different island people and cultures through music. Island Base provides safe spaces and mentorship with professional industry experts by pairing up young creatives with a Base FM DJ or local NZ artist (professional music partitioners), studio facilities, equipment, etc. and tap into the radio station by using it as a platform for our rangatahi to connect with industry leaders, learn and create.

With the focus on providing access for lower socioeconomic groups such as Maori/Pasifika who usually wouldn't be able to participate within this art form and in a professional environment via different channels of creating music such as DJing, producing, song-writing, rapping and singing.

Our aim is to strengthen communities using music and fun to actively participate in the arts and connect with different demographics and celebrate diversity.

	2023	2022
<b>Description and Quantification of the Entity's Outputs</b>		
Mentoring rangatahi	300	300
Hours of community work	1,500	1,500

### Description and Quantification of the Entity's Outputs

Island Base Trust has mentored over 300 rangatahi, delivered over 1,500 hours of community work by a roster of 30 plus industry professionals and 20 volunteers.  
<https://islandbasefm.com/funders/>

# Statement of Financial Performance

## Island Base Trust

For the year ended 31 March 2023

	NOTES	2023	2022
<b>Revenue</b>			
Donations, fundraising and other similar revenue	1	100	-
Revenue from providing goods or services	1	134,907	83,997
Interest, dividends and other investment revenue	1	118	13
<b>Total Revenue</b>		<b>135,125</b>	<b>84,010</b>
<b>Expenses</b>			
Volunteer and employee related costs	2	88,580	-
Costs related to providing goods or service	2	44,895	76,144
Other expenses	2	393	-
<b>Total Expenses</b>		<b>133,868</b>	<b>76,144</b>
<b>Surplus/(Deficit) for the Year</b>		<b>1,257</b>	<b>7,866</b>

This statement has been prepared without conducting an audit or review engagement, and should be read in conjunction with the attached Compilation Report.

# Statement of Financial Position

## Island Base Trust As at 31 March 2023

	NOTES	31 MAR 2023	31 MAR 2022
<b>Assets</b>			
<b>Current Assets</b>			
Bank accounts and cash	3	77,157	42,541
Debtors and prepayments	3	-	13,403
Other Current Assets	3	12	-
<b>Total Current Assets</b>		<b>77,169</b>	<b>55,944</b>
<b>Non-Current Assets</b>			
Property, Plant and Equipment	5	954	-
<b>Total Non-Current Assets</b>		<b>954</b>	<b>-</b>
<b>Total Assets</b>		<b>78,123</b>	<b>55,944</b>
<b>Liabilities</b>			
<b>Current Liabilities</b>			
Creditors and accrued expenses	4	13,580	3,185
Employee costs payable	4	420	-
Receipts in Advance		55,000	44,893
<b>Total Current Liabilities</b>		<b>69,000</b>	<b>48,078</b>
<b>Total Liabilities</b>		<b>69,000</b>	<b>48,078</b>
<b>Total Assets less Total Liabilities (Net Assets)</b>		<b>9,123</b>	<b>7,866</b>
<b>Accumulated Funds</b>			
Accumulated surpluses or (deficits)	6	9,123	7,866
<b>Total Accumulated Funds</b>		<b>9,123</b>	<b>7,866</b>

This statement has been prepared without conducting an audit or review engagement, and should be read in conjunction with the attached Compilation Report.

# Statement of Cash Flows

## Island Base Trust

For the year ended 31 March 2023

	2023	2022
<b>Cash Flows from Operating Activities</b>		
Donations, fundraising and other similar receipts	100	-
Receipts from providing goods or services	156,907	73,997
Interest, dividends and other investment receipts	118	13
GST	16,750	(3,492)
Payments to suppliers and employees	(145,153)	(75,944)
Donations or grants paid	-	(200)
<b>Total Cash Flows from Operating Activities</b>	<b>28,722</b>	<b>(5,626)</b>
<b>Cash Flows from Investing and Financing Activities</b>		
Payments to acquire property, plant and equipment	(1,347)	-
Cash flows from other investing and financing activities	7,241	48,167
<b>Total Cash Flows from Investing and Financing Activities</b>	<b>5,894</b>	<b>48,167</b>
<b>Net Increase/(Decrease) in Cash</b>	<b>34,616</b>	<b>42,541</b>
<b>Bank Accounts and Cash</b>		
Opening cash	42,541	-
Net change in cash for period	34,616	42,541
Closing cash	77,157	42,541

This statement has been prepared without conducting an audit or review engagement, and should be read in conjunction with the attached Compilation Report.



# Statement of Accounting Policies

## Island Base Trust

For the year ended 31 March 2023

### Basis of Preparation

The entity has elected to apply PBE SFR-A (NFP) Public Benefit Entity Simple Format Reporting - Accrual (Not-For-Profit) on the basis that it does not have public accountability and has total annual expenses equal to or less than \$2,000,000. All transactions in the Performance Report are reported using the accrual basis of accounting. The Performance Report is prepared under the assumption that the entity will continue to operate in the foreseeable future.

### Goods and Services Tax (GST)

The entity is registered for GST. All amounts are stated exclusive of goods and services tax (GST) except for accounts payable and accounts receivable which are stated inclusive of GST.

### Income Tax

Island Base Trust is wholly exempt from New Zealand income tax having fully complied with all statutory conditions for these exemptions.

### Bank Accounts and Cash

Bank accounts and cash in the Statement of Cash Flows comprise cash balances and bank balances (including short term deposits) with original maturities of 90 days or less.

### Changes in Accounting Policies

There have been no changes in accounting policies. Policies have been applied on a consistent basis with those of the previous reporting period.

# Notes to the Performance Report

## Island Base Trust

For the year ended 31 March 2023

2023 2022

### 1. Analysis of Revenue

#### Donations, fundraising and other similar revenue

Donations Received	100	-
<b>Total Donations, fundraising and other similar revenue</b>	<b>100</b>	<b>-</b>

#### Revenue from providing goods or services

Grants Received	89,893	83,997
Flexi Wage Income - MSD	45,014	-
<b>Total Revenue from providing goods or services</b>	<b>134,907</b>	<b>83,997</b>

#### Interest, dividends and other investment revenue

Interest Income	118	13
<b>Total Interest, dividends and other investment revenue</b>	<b>118</b>	<b>13</b>

2023 2022

### 2. Analysis of Expenses

#### Volunteer and employee related costs

Salaries - MSD Subsidised	43,335	-
Admin - Jasmin	29,100	-
Contractors	7,327	-
Programme Leader - Chris	7,900	-
Travel - National	918	-
<b>Total Volunteer and employee related costs</b>	<b>88,580</b>	<b>-</b>

#### Costs related to providing goods or services

Accountancy	3,732	1,800
Advertising	503	-
Bank Fees	78	-
Catering	416	-
Computer/Music Studio Expenses	1,060	-
Design, Media & Website Expenses	5,454	9,951
Donations Expense	-	200
Entertainment	1,221	698
Freight & Courier	5	-
General Expenses	385	188
Storage Costs	1,300	-
Insurance	2,936	1,053
Low Value Assets	988	59
Mangement Fees	-	11,587
Mentoring Fees	2,233	37,721
Merchandise	3,044	2,537
Motor Vehicle Expenses	4,009	-
Office Expenses	1,331	-

	2023	2022
Printing & Stationery	-	198
Recording Costs	1,010	-
Rent - Commercial	12,150	9,450
Subscriptions	212	-
Telephone & Internet	2,826	702
<b>Total Costs related to providing goods or services</b>	<b>44,895</b>	<b>76,144</b>
<b>Other expenses</b>		
Depreciation	393	-
<b>Total Other expenses</b>	<b>393</b>	<b>-</b>

	2023	2022
--	------	------

### 3. Analysis of Assets

<b>Bank accounts and cash</b>		
Trust Account 00	77,157	42,541
<b>Total Bank accounts and cash</b>	<b>77,157</b>	<b>42,541</b>
<b>Debtors and prepayments</b>		
Accounts Receivable	-	11,500
Prepayments	-	1,903
<b>Total Debtors and prepayments</b>	<b>-</b>	<b>13,403</b>
<b>Other current assets</b>		
Withholding tax paid	12	-
<b>Total Other current assets</b>	<b>12</b>	<b>-</b>
	2023	2022

### 4. Analysis of Liabilities

<b>Creditors and accrued expenses</b>		
Accruals	-	5,177
GST	13,580	(1,992)
<b>Total Creditors and accrued expenses</b>	<b>13,580</b>	<b>3,185</b>
<b>Employee costs payable</b>		
Wages Deductions Payable	420	-
<b>Total Employee costs payable</b>	<b>420</b>	<b>-</b>
<b>Other current liabilities</b>		
Receipts in Advance	55,000	44,893
<b>Total Other current liabilities</b>	<b>55,000</b>	<b>44,893</b>
	2023	2022

### 5. Property, Plant and Equipment

<b>Other Fixed Assets</b>		
Owned fixed assets	1,347	-

Accumulated depreciation - fixed assets owned	(393)	-
<b>Total Other Fixed Assets</b>	<b>954</b>	<b>-</b>
<b>Total Property, Plant and Equipment</b>	<b>954</b>	<b>-</b>
	<b>2023</b>	<b>2022</b>

## 6. Accumulated Funds

<b>Accumulated Funds</b>		
Opening Balance	7,866	-
Accumulated surpluses or (deficits)	1,257	7,866
<b>Total Accumulated Funds</b>	<b>9,123</b>	<b>7,866</b>
<b>Total Accumulated Funds</b>	<b>9,123</b>	<b>7,866</b>

## 7. Commitments

There are no commitments as at 31 March 2023 (Last year - nil).

## 8. Contingent Liabilities and Guarantees

There are no contingent liabilities or guarantees as at 31 March 2023 (Last year - nil).

## 9. Significant Grants and Donations with Conditions not Recorded as a Liability

- There were no significant grants or donations with conditions not recorded as a liability as at 31 March 2023 (2022: nil).

	<b>2023</b>	<b>2022</b>
--	-------------	-------------

## 10. Related Parties

### Receivables

Party and nature of relationship	-	-
Party and nature of relationship	-	-
<b>Total Receivables</b>	<b>-</b>	<b>-</b>

### Payables

Jasmin Lolesio - Trustee	29,100	39,457
Chris Hartnett - Trustee	7,900	3,501
Kyle Popham - Trustee	-	500
<b>Total Payables</b>	<b>37,000</b>	<b>43,458</b>

### Sales

Party and nature of relationship	-	-
Party and nature of relationship	-	-
<b>Total Sales</b>	<b>-</b>	<b>-</b>

### Purchases

Party and nature of relationship	-	-
Party and nature of relationship	-	-
<b>Total Purchases</b>	<b>-</b>	<b>-</b>

### **11. Events After the Balance Date**

There were no events that have occurred after the balance date that would have a material impact on the Performance Report (Last year - nil).

### **12. Ability to Continue Operating**

The entity will continue to operate for the foreseeable future.



# THANK YOU!

<https://islandbasefm.com/contact/>

Become a volunteer, music mentor or to enroll. All of our programmes are free of charge for rangatahi aged 10-24.

Jazz Lolesio, Executive Director  
[jazz@islandbasefm.com](mailto:jazz@islandbasefm.com)  
+64 21 886675

